

# Statement of Community Consultation

## PROPOSED WIND FARM AT DORAVILLE

---

This Statement of Community Consultation sets out how SSE Renewables will consult with you on the Doraville wind farm proposal and the methods available to local communities, residents, businesses, interest groups and the general public to view and comment on the developing proposal.

Our 12 week pre-planning public consultation process will take place from September 10th – November 26th 2014. SSE welcomes the submission of written comments which will be considered in advance of the company's planning application to DOE Planning Service in early 2015.

### Aims of our consultation

- To explain our proposal to you in a clear and open manner
- To explain how you can have your say
- To understand your views and enable you to put forward your ideas on the proposed development
- To answer any questions or concerns you may have
- To understand any local issues that should be considered by us while we develop the project

## Our consultation process

### WE ARE HERE

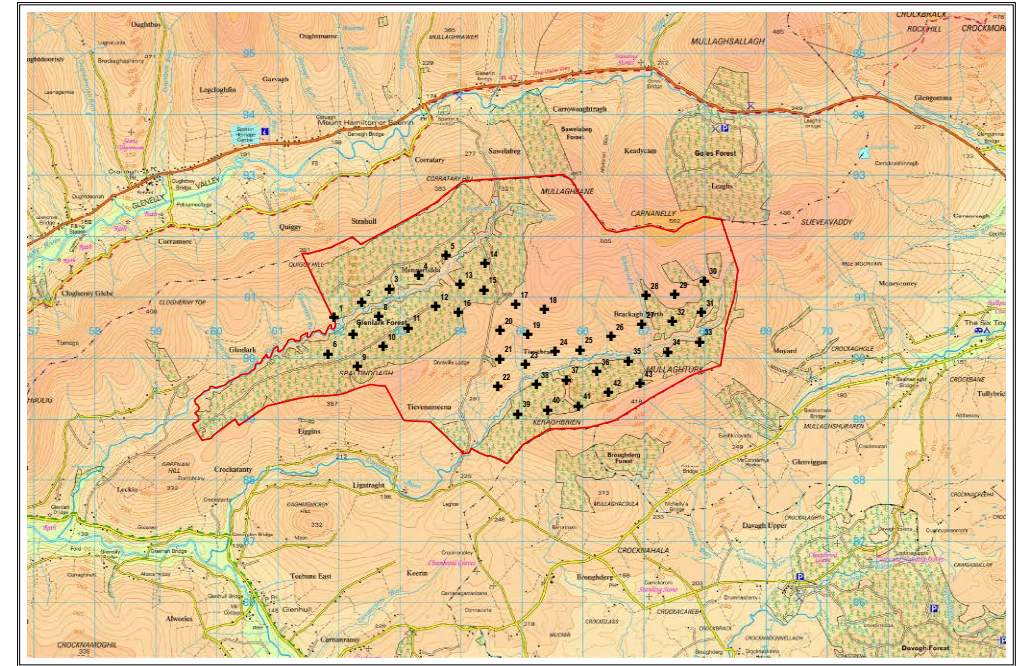
- Pre Application Phase
- STAGE ONE
- 12 week Consultation Period
- 10th September 2014 to 26th November 2014

### BEFORE END 2014

- Pre Application Phase
- STAGE TWO
- Consultation Evaluation and Response
- November 26th 2014 to End December 2014

### EXPECTED EARLY 2015

- Application Phase
- STAGE THREE
- Submission of Planning Application
- Early 2015



## Summary of the Doraville Wind Farm Proposal

SSE is currently conducting an Environmental Impact Assessment (EIA) for a proposed wind farm development located south of the Sperrins Mountains. The proposed wind farm site is located within Country Tyrone and is approximately 12km to the west of Draperstown, in County Derry/Londonderry. The village of Broughderg is situated 2km to the south of the proposed site on the Broughderg Road, which links Draperstown to Greencastle, 10km to the south west of the Doraville site. The B47, which runs adjacent to the northern boundary of the site, provides the primary route between Strabane, 25km to the west of the site and the Draperstown area.

SSE's proposal includes:

- Up to 43 turbines
- Site entrance point
- On site access tracks
- Forestry felling, extent required to be determined
- Electrical substation and control building
- Temporary construction compounds
- Borrow pit(s)
- Permanent meteorological mast(s)
- Public road upgrades for delivery of turbines

## Our Consultation Methods

In order to reach out to as many local people as possible, SSE will use a number of consultation methods, which include:

- Public consultation event
- Public drop-in information events
- Written project updates to local residents, community groups and elected representatives
- Project update presentations to Local Councils
- Media engagement- press releases and formal adverts
- Project Leaflets
- Project Website updates
- Project questionnaires

## Next Steps

Following the consultation period, we will produce a consultation report summarising the responses received and outlining how they have been considered in the development of the proposed wind farm. This report will be included as part of our planning application and will also be made available on our project web site.

## Commenting on our Proposal

### Write to us:

Ms. Bronagh Gormley  
Community Liaison Officer  
SSE Renewables,  
Omagh Enterprise Centre  
Great Northern Road,  
Omagh,  
Co. Tyrone,  
BT78 5LU

**Email us:** [bronagh.gormley@sserenewables.com](mailto:bronagh.gormley@sserenewables.com)

**Call us:** 028 82 253 942

**Visit our project website:** [Ireland.sse.com/doraville](http://Ireland.sse.com/doraville)

Please note that the deadline for all responses is midnight on Wednesday 26th November 2014.

## About SSE Renewables

SSE Renewables is part of SSE plc, the leading developer and generator of renewable energy in Great Britain and Ireland, and is Northern Ireland's leading renewable energy developer. The green energy generated at wind farms developed by SSE Renewables helps power SSE Airtricity, Northern Ireland's second largest and greenest energy provider supplying greener electricity and natural gas to around 300,000 homes and businesses across the country.

As a company, SSE aims to decarbonise its power generation by 50% by 2020. In moving to low carbon generation, ongoing investment in renewable energy will play a crucial role. SSE is also committed to help meet the targets set by the Northern Ireland Executive to generate 40% of electricity from renewable sources by 2020.

SSE Renewables has delivered five wind farms in Northern Ireland to date, including the existing 14MW Bessy Bell project northwest of Omagh. Our latest wind farm project was the 73MW Slieve Kirk Wind Park outside Derry-Londonderry which powers around 60,000<sup>†</sup> homes.

